



Near-ground effect of height on pollen exposure

Jesús Rojo^{a,b,*}, Jose Oteros^a, Rosa Pérez-Badía^b, Patricia Cervigón^c, Zuzana Ferencová^c, A. Monserrat Gutiérrez-Bustillo^c, Karl-Christian Bergmann^d, Gilles Oliver^e, Michel Thibaudon^e, Roberto Albertini^f, David Rodríguez-De la Cruz^g, Estefanía Sánchez-Reyes^g, José Sánchez-Sánchez^g, Anna-Mari Pessi^h, Jukka Reiniharjuⁱ, Annika Saarto^h, M. Carmen Calderón^j, César Guerrero^j, Daniele Berra^k, Maira Bonini^l, Elena Chiodini^k, Delia Fernández-González^m, José Garcíaⁿ, M. Mar Trigoⁿ, Dorota Myszkowska^o, Santiago Fernández-Rodríguez^p, Rafael Tormo-Molina^p, Athanasios Damialis^q, Franziska Kolek^q, Claudia Traidl-Hoffmann^{q,r}, Elena Severova^s, Elsa Caeiro^t, Helena Ribeiro^u, Donát Magyar^v, László Makra^w, Orsolya Udvardy^v, Purificación Alcázar^x, Carmen Galán^x, Katarzyna Borycka^y, Idalia Kasprzyk^y, Ed Newbigin^z, Beverley Adams-Groom^{aa}, Godfrey P. Apangu^{aa}, Carl A. Frisk^{aa}, Carsten A. Skjøth^{aa}, Predrag Radišić^{ab}, Branko Šikoparija^{ab}, Sevcan Celenk^{ac}, Carsten B. Schmidt-Weber^a, Jeroen Buters^a

^a Center of Allergy & Environment (ZAUM), Member of the German Center for Lung Research (DZL), Technical University and Helmholtz Center Munich, Germany

^b University of Castilla-La Mancha Institute of Environmental Sciences (Botany), Toledo, Spain

^c Complutense University of Madrid, Spain

^d Charité Universitätsmedizin Berlin, Germany

^e Réseau National de Surveillance Aérobiologique, Brussieu, France

^f Department of Medicine and Surgery, University of Parma, Italy

^g University of Salamanca, Spain

^h University of Turku, Turun yliopisto, Aerobiology Unit, Finland

ⁱ University of Turku, Finland

^j National Autonomous University of Mexico, Mexico

^k Ospedale di Circolo, ASST Valle Olona, Italy

^l Local Health Authority ATS della Città Metropolitana di Milano, Italy

^m University of León, Spain

ⁿ University of Malaga, Spain

^o Jagiellonian University Medical College, Poland

^p University of Extremadura, Spain

^q Chair and Institute of Environmental Medicine, UNIKA-T, Technical University of Munich and Helmholtz Zentrum München, Research Center for Environmental Health, Augsburg, Germany

^r CK CARE Christine Kühne Center for Allergy Research and Education, Switzerland

^s Lomonosov Moscow State University, Russia

^t Sociedade Portuguesa de Alergologia e Imunologia Clínica, Lisboa, Portugal

^u Faculty of Sciences, University of Porto, Portugal

^v National Public Health Center, Hungary

^w University of Szeged, Hungary

^x University of Córdoba, Spain

^y University of Rzeszów, Poland

^z University of Melbourne, Australia

^{aa} University of Worcester, UK

^{ab} BioSense Institute, University of Novi Sad, Serbia

^{ac} Uludag University, Turkey

* Corresponding author. Biedersteinerstrasse 29, 80802 Munich, Germany.

E-mail address: jesus.rojo.ubeda@gmail.com (J. Rojo).

<https://doi.org/10.1016/j.envres.2019.04.027>

Received 9 January 2019; Received in revised form 22 April 2019; Accepted 23 April 2019

Available online 29 April 2019

0013-9351/ © 2019 Elsevier Inc. All rights reserved.

ARTICLE INFO

Keywords:

Height
Pollen
Aerobiology
Monitoring network
Big data

ABSTRACT

The effect of height on pollen concentration is not well documented and little is known about the near-ground vertical profile of airborne pollen. This is important as most measuring stations are on roofs, but patient exposure is at ground level. Our study used a big data approach to estimate the near-ground vertical profile of pollen concentrations based on a global study of paired stations located at different heights. We analyzed paired sampling stations located at different heights between 1.5 and 50 m above ground level (AGL). This provided pollen data from 59 Hirst-type volumetric traps from 25 different areas, mainly in Europe, but also covering North America and Australia, resulting in about 2,000,000 daily pollen concentrations analyzed. The daily ratio of the amounts of pollen from different heights per location was used, and the values of the lower station were divided by the higher station. The lower station of paired traps recorded more pollen than the higher trap. However, while the effect of height on pollen concentration was clear, it was also limited (average ratio 1.3, range 0.7–2.2). The standard deviation of the pollen ratio was highly variable when the lower station was located close to the ground level (below 10 m AGL). We show that pollen concentrations measured at > 10 m are representative for background near-ground levels.

1. Introduction

Respiratory diseases related to allergy are considered as one of the most important public health problem for the 21st century, according to the World Allergy Organisation (Pawankar et al., 2013). Bioaerosols such as pollen grains or spores are the main cause of allergic diseases and their incidence is rising also due to climate change and urban pollution (Cecchi et al., 2010; Lake et al., 2017; Reinmuth-Selzle et al., 2017). According to the European Academy of Allergy and Clinical Immunology around 30% of the population from industrialized areas suffers from allergic diseases (European Academy of Allergy and Clinical & Immunology, 2015). For this reason the interest in aeroallergens has increased and in addition to measuring air quality from inorganic pollutants (Zhang et al., 2016; Fugiel et al., 2017), monitoring networks for biological air components like pollen were installed during the last decades of the 20th century (Hertel et al., 2013). The interest increased since recent studies revealed the effects of the interaction between the inorganic pollutants and aeroallergens on allergies and respiratory diseases (Sénéchal et al., 2015; Reinmuth-Selzle et al., 2017; Cole-Hunter et al., 2018). Moreover, monitoring of biological particulate matter also provides relevant information for agronomic or ecological purposes (Jarosz et al., 2005; Fernandez-Gonzalez et al., 2013; Charalampopoulos et al., 2018; Romero-Morte et al., 2018).

The vertical profile of the bioaerosol concentrations was analyzed in the lower atmosphere using aircrafts or tethered balloons (Gregory, 1978; Gruber et al., 1998; Comtois et al., 2000; Damialis et al., 2017). Although in general terms, Gregory (1978) demonstrated that the concentration of bioaerosols decreases logarithmically with height from ground level up to the upper layers of the troposphere, certain types of biological particles can show higher concentrations in higher heights above ground level (Comtois et al., 2000; Damialis et al., 2017) due to the long-distance transport of particulate matter below the atmospheric boundary layer (Makra et al., 2016, 2010; Rojo et al., 2019). Different processes of the atmospheric dynamic determine changes on the vertical profile of bioaerosols between tropospheric vertical profile and the near-ground vertical profile (Orlanski, 1975) i.e. only reaching tens of meters above ground level (AGL).

Around the world, airborne pollen monitoring is mainly done by samplers located at higher locations (Buters et al., 2018), such as rooftops of buildings, following the recommendations of the standard methodology agreed by the international aerobiology associations (Galán et al., 2014; Jäger et al., 1995). The reason of sampling at rooftops is that pollen concentrations should be sampled at homogeneous conditions, enabling a single trap to cover a large area around the sampling station, e.g. the area of a city. However, measured

airborne pollen at rooftop levels could be different from those at ground level, where patient outdoor pollen exposure occurs (Peel et al., 2013; Penel et al., 2017; Fernández-Rodríguez et al., 2018). Although many stations are at variable heights above ground, the effect of height on pollen sampling is not well documented, although the subject has been addressed at a local scale in numerous papers (See Supplementary Material Table S1). To estimate the near-ground level of pollen from rooftop measurements we analyzed all the available data from paired traps across the world.

The study of the near-ground vertical profile on pollen concentration is complex and rarely more than two samplers at the same location are analyzed (Galán et al., 1995; Myszkowska et al., 2012; Fernández-Rodríguez et al., 2014; Rodríguez de la Cruz et al., 2016; Borycka and Kasprzyk, 2018) (Supplementary Material Table S1). As a consequence, up to date few researches have considered a vertical profile using more than two sampling heights simultaneous at one location (Raynor et al., 1973; Bryant et al., 1989; Fiorina et al., 1999; Alcazar and Comtois, 2000; Jarosz et al., 2005; Chakraborty et al., 2001; Xiao et al., 2013). Representative examples considering the near-ground vertical profile of pollen are the study of Raynor et al. (1973) on a meteorological tower in USA up to 108 m AGL or the study by Barbosa et al. (2018), at the Amazon Tall Tower Observatory (ATTO) in Brazil up to 300 m AGL, reaching the maximum studied height for a static sampler. Few other heights were analyzed for the near-ground vertical profile of airborne pollen and it is also difficult to find studies that were maintained over a longer period of time.

Our study estimated the near-ground vertical profile of pollen concentrations using a big data approach based on a global study of paired stations located at different heights within the first tens of meters above ground level. The study used data from 59 pollen stations around the world (about 2,000,000 daily pollen concentrations) and yields important conclusions that can be generalized to different areas across the world for most pollen types.

2. Materials and methods

2.1. Pollen data

We studied the effect of height of air sampling on pollen concentrations in 25 areas around the world from 99.28° west to 145.13° east and from 60.46° north to 3.83° south, mainly in Europe, but also covering North America and Australia (Table 1; Supplementary Material Fig. S1).

Pollen data from 2 to 5 monitoring stations were considered from each area and analyzed, yielding a total of 59 pollen stations (Table 1). The same type of sampling device (Hirst-type volumetric trap (Hirst,

Table 1
Detailed information about the pollen stations located in the studied areas. *Latitude and longitude values show a geographical range when pollen stations are separated from each other.

City of the studied area (country)	Sampling heights (m AGL)	Latitude (decimal degrees)*	Longitude (decimal degrees)*
Augsburg (Germany)	1.5, 13	48.32–48.33	10.90
Badajoz (Spain)	2, 6, 16	38.88–38.90	–7.00––6.97
Budapest (Hungary)	12, 23	47.48	19.08–19.09
Bursa (Turkey)	20, 20	40.22	28.88
Copenhagen (Denmark)	15, 20	55.70–55.72	12.55
Cordoba (Spain)	1.5, 15	37.87	–4.80
Krakow (Poland)	15, 20	50.06	19.94–19.95
Leon (Spain)	15, 20	42.60–42.61	–5.57––5.56
Madrid (Spain)	8, 10, 16, 18	40.31–40.45	–3.76––3.70
Malaga (Spain)	12, 15	36.72–36.73	–4.47––4.42
Melbourne (Australia)	3, 4, 14	–37.82––37.80	144.90–145.13
Mexico City (Mexico)	10, 10, 15	19.33–19.41	–99.28––99.18
Milan (Italy)	17, 18	45.60–45.61	8.84–8.92
Moscow (Russia)	1.5, 10	55.70	37.53
Munich (Germany)	2, 8, 8, 8, 35	48.13–48.22	11.56–11.60
Paris (France)	30, 43, 50	48.84–48.89	2.31–2.37
Parma (Italy)	18, 32	44.80	10.31–10.32
Porto (Portugal)	10, 18	41.15–41.18	–8.64––8.60
Rzeszow (Poland)	1.5, 12	50.00	22.02
Salamanca (Spain)	14, 23	40.97	–5.68––5.66
Szeged (Hungary)	18, 20	46.24–46.25	20.14–20.17
Turku (Finland)	1.5, 15	60.46	22.29
Valladolid (Spain)	17, 32	41.64–41.66	–4.73
Worcester (United Kingdom)	4, 10	52.20–52.25	–2.25––2.24
Zrenjanin (Serbia)	20, 20	45.38	20.40

1952)) was used in all studied stations. The standard methodology agreed by the International Association for Aerobiology (IAA) (Jäger et al., 1995) or the European Aerobiology Society (EAS) (Galán et al., 2014; Šikoparija et al., 2017) was followed.

Availability of pollen data from paired station fulfilling our criteria was obtained with the help of the Worldwide Map of Pollen Monitoring Stations (Buters et al., 2018).

2.2. Calculation of the pollen ratio between paired stations

After pairing pollen monitoring stations, a total of 47 paired stations was obtained. For instance, an area provided only one pair when two

Table 2
Number of significant differences in ratio per pollen type (p < 0.05, Tukey post hoc test). The height effect is not pollen dependent, except for *Platanus* and *Cupressaceae* in some stations. The rest of paired stations did not display differences (70%).

^a Paired-station	Alnu	Ambr	Betu	Cupr	Frax	Olea	Pina	Plan	Plat	Poac	Popu	Urti
1 Badajoz (2/16)						2	2	1	1			
2 Badajoz (2/6)						1		2		1		
3 Badajoz (6/16)						2		2		2		
4 Copenhagen (15/20)			1		3		2			1		1
5 Cordoba (1.5/15)				1		2				1		
6 Madrid (10/18)				1	1	1	1	1	7	1	1	
7 Madrid (8/16)				4	1	2	1	2	7	2	1	
8 Milan (17/18)	1		2	1			2		6	3		1
9 Munich (2/35)	1		2	7	3		1			1	1	2
10 Parma (18/32)									2	1	1	
11 Salamanca (14/23)					1	1						
12 Turku (1.5/15)			1				1					

Pollen types: Alnu *Alnus*, Ambr *Ambrosia*, Betu *Betula*, Cupr *Cupressaceae/Taxaceae*, Frax *Fraxinus*, Olea *Olea*, Pina *Pinaceae*, Plan *Plantago*, Plat *Platanus*, Poac *Poaceae*, Popu *Populus*, Urti *Urticaceae*.

^a Stations per city (x/y): x height of the lower station, y height of the higher station, given in m AGL.

stations were combined for that area e.g. Augsburg (Germany). Other areas with more concomitant stations could provide more pairs, like ten pairs of stations when five stations available for that area, e.g. Munich (Germany) (Table 1). Stations within 10 km of each other were considered a pair (this criterium can be changed in the online analysis program: https://modeling-jesus-rojo.shinyapps.io/result_app2/, accessed March 2019). The height of selected stations was between 1.5 and 50 m AGL (Supplementary Material, Figure S2).

Daily ratios of pollen concentrations were used to study the effect of height, and the mean pollen ratio (MPR) between two paired stations was calculated using equation (1). The standard deviation was estimated from daily pollen ratios.

$$\text{Mean Pollen Ratio (MPR)} = \frac{\sum^n PC_{\text{lower}} / PC_{\text{higher}}}{n} \quad (1)$$

where, MPR is the mean of the daily pollen ratio, PC_{lower} is the pollen concentration from the lower pollen trap, PC_{higher} the pollen concentration from the higher pollen trap, and n is the number of days with pollen concentrations > 10 grains/m³ for both traps (this threshold has been used to reduce sources of error due to very low pollen concentrations, see below).

Equation (1) exemplifies that if MPR > 1 then the lower pollen trap measured higher pollen concentrations. Alternatively, if MPR < 1, the higher pollen trap measured more pollen than the lower trap.

2.3. Data quality assessment

To assess data quality, only years where the pollen data series from the paired stations were significantly correlated (R > 0.8) were included. Additionally, only days with pollen concentrations > 10 grains/m³ for both traps of a pair were considered (Buters et al., 2015). The aim of these inclusion criteria was to minimize errors in the measurements of very low pollen concentrations, inherent to the aerobiological methods and documented by previous studies (Cotos-Yáñez et al., 2013; Šikoparija et al., 2017). This threshold of 10 grains/m³ was used for all different pollen types and was a compromise value between reducing possible sources of error due to inaccurate pollen measurements and the largest possible number of data and number of stations for the analysis of each pollen type.

Pollen concentrations between sites can vary independent of the effects of height on air sampling (Tormo-Molina et al., 2013). Sources of variability may be instrumental (Oteros et al., 2017), environmental or human (Pedersen and Moseholm, 1993; Comtois et al., 1999; Oteros et al., 2013). To assess the effect of height-independent sources of variability (e.g. variations due to instrumental or human errors), pollen concentration from paired stations located at the same height and at the

same location were analyzed as special cases. The areas selected for this comparison were: Munich (Germany), where three pollen stations were located at 8 m AGL (Buters et al., 2012) and Zrenjanin (Serbia) where two pollen stations were located at 20 m AGL. In these special cases, the mean pollen ratio was represented as a range of values around one, since either pollen stations could be used as the numerator when calculating the pollen ratio.

2.4. Statistical analysis

Although a great number of woody and herbaceous pollen types were analyzed, only the total pollen sum for all pollen types and total for the woody and for the herbaceous pollen types are shown in the results about the vertical profile of airborne pollen, ensuring an adequate number of cases to be studied. More detailed information on individual pollen types is given in Supplementary Material (Figure S3,

and online at https://modeling-jesus-rojo.shinyapps.io/result_app2/, accessed March 2019). Pollen types considered from woody plants were *Alnus* (alder), *Betula* (birch), Cupressaceae/Taxaceae (cypress/yew), *Fraxinus* (ash), *Olea* (olive), Pinaceae (pines and cedars), *Platanus* (plane tree) and *Quercus* (oak and holm-oak). Herbaceous plants included were *Ambrosia* (ragweed), *Plantago* (plantain), Poaceae (grass) and Urticaceae (nettle and pellitory). Again, the analysis can be adjusted to individual preferences online (see above).

Differences in ratios between pollen types were analyzed using a one-way analysis of variance (ANOVA) to determine whether the daily ratios of one pollen type deviated from other pollen types, i.e. whether some pollen type behaved differently to other pollen types. If ANOVA detected a significant difference among pollen, a Tukey test was then applied to determine exactly which pollen differed significantly from the others (see Table 2). The management of the pollen database and all analyses were carried out using the statistical software R (R

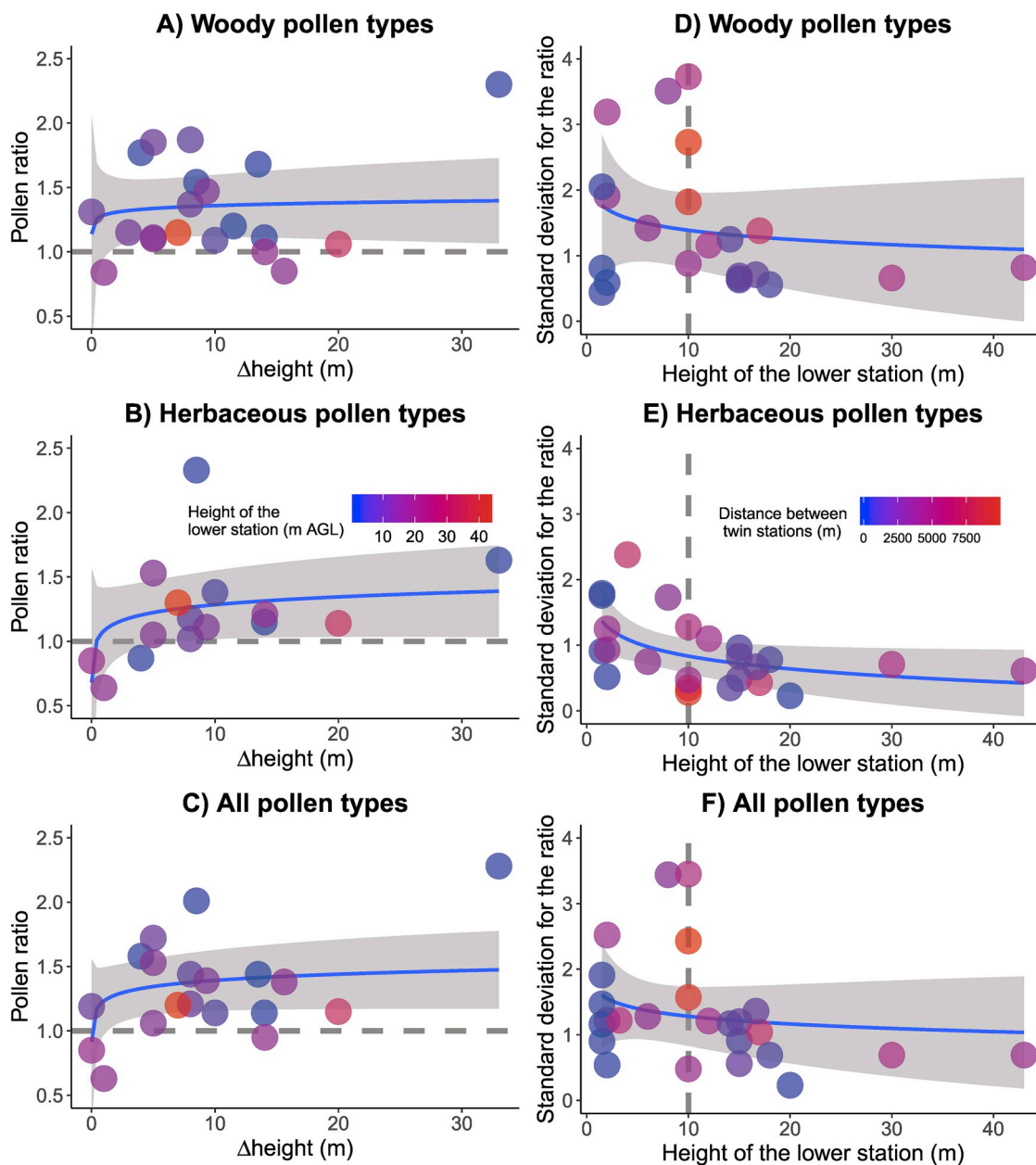


Fig. 1. Relationship between the mean pollen ratio and the height difference between paired-stations (A–C). Relationship between the standard deviation of the mean pollen ratio and the height of the lower station (D–F). A logarithmic function was fitted and the 99% confidence intervals are shown. The vertical dashed line in D–F is the minimum height proposed for the lower station. The plots for the individual pollen types are given in Supplemental Material.

Development Core Team, 2017).

3. Results and discussion

The results show that as the height difference increases, the pollen ratio increased (i.e. pollen concentrations were lower at increased height). Above a certain height difference the ratio stabilizes at around 1.5 (Fig. 1A–C). Thus, the difference in pollen concentrations registered by the lower station was maximally 50% higher than observed at higher height (the maximum height difference considered, $\Delta\text{height} = 33\text{ m}$). The increasing of the ratio with the height difference was more evident in the first 10 m of difference between pollen traps, as observed in Fig. 2 showing more detailed information for this lower range (0–10 m). This general behavior is shown for total pollen amounts (Fig. 1A–C) and for the most pollen types studied such as *Betula*, *Fraxinus*, Poaceae, *Quercus* or Urticaceae (Supplemental Material, Figure S3). Chan and Kwok (2000) reported a similar pattern of vertical distribution in suspended particulate matter, with a decrease in airborne particle concentrations occurring mainly within the first meters of increase in height.

Our study on the height on pollen sampling showed that most of the paired stations for most of the pollen types yielded values of mean pollen ratio higher than 1. Therefore, the pollen traps at lower height registered generally higher pollen concentrations. Pollen ratio higher than 1 were expected according to the reviewed literature (Alcázar et al., 1999a; Xiao et al., 2013), as pollen concentrations decrease with

height. However, this behavior was not observed for all reviewed cases, possibly due to the influence of other factors than height as discussed below (Borycka and Kasprzyk, 2018; Bryant et al., 1989; Khattab and Levetin, 2008).

Not only the height difference between paired pollen stations is important. The height above ground level of the lower station (minimum height) plays a crucial role on the effect of height on pollen concentrations. Fig. 1 (D–F) showed that the standard deviation of the pollen ratio is highly variable when the lower station is located close to the ground level reaching standard deviations above 3 when the height of the lower station was below 10 m AGL. Similar to pollen grains, also concentrations of other particulate matter (Brady et al., 2016) and gases (that have no sedimentation) at ground level showed more daily fluctuations in concentrations than those registered at higher levels of the troposphere, where concentrations are more stable (Salmond et al., 2013; Zhang and Rao, 1999).

In general, a greater pollen ratio between paired stations was observed when the lower station was located below 10 m AGL (Fig. 1A–C). Above this level, standard deviation showed a strong reduction and a marked stabilization (Fig. 3). These results could be interpreted as showing that airborne pollen sampled in the first few meters from ground level (emission source) is dependent on the height of the trap but their concentrations are also highly fluctuating over time due to local pollen emission, deposition or resuspension, or phenomena of atmospheric dynamics produced at microscale. Then, pollen

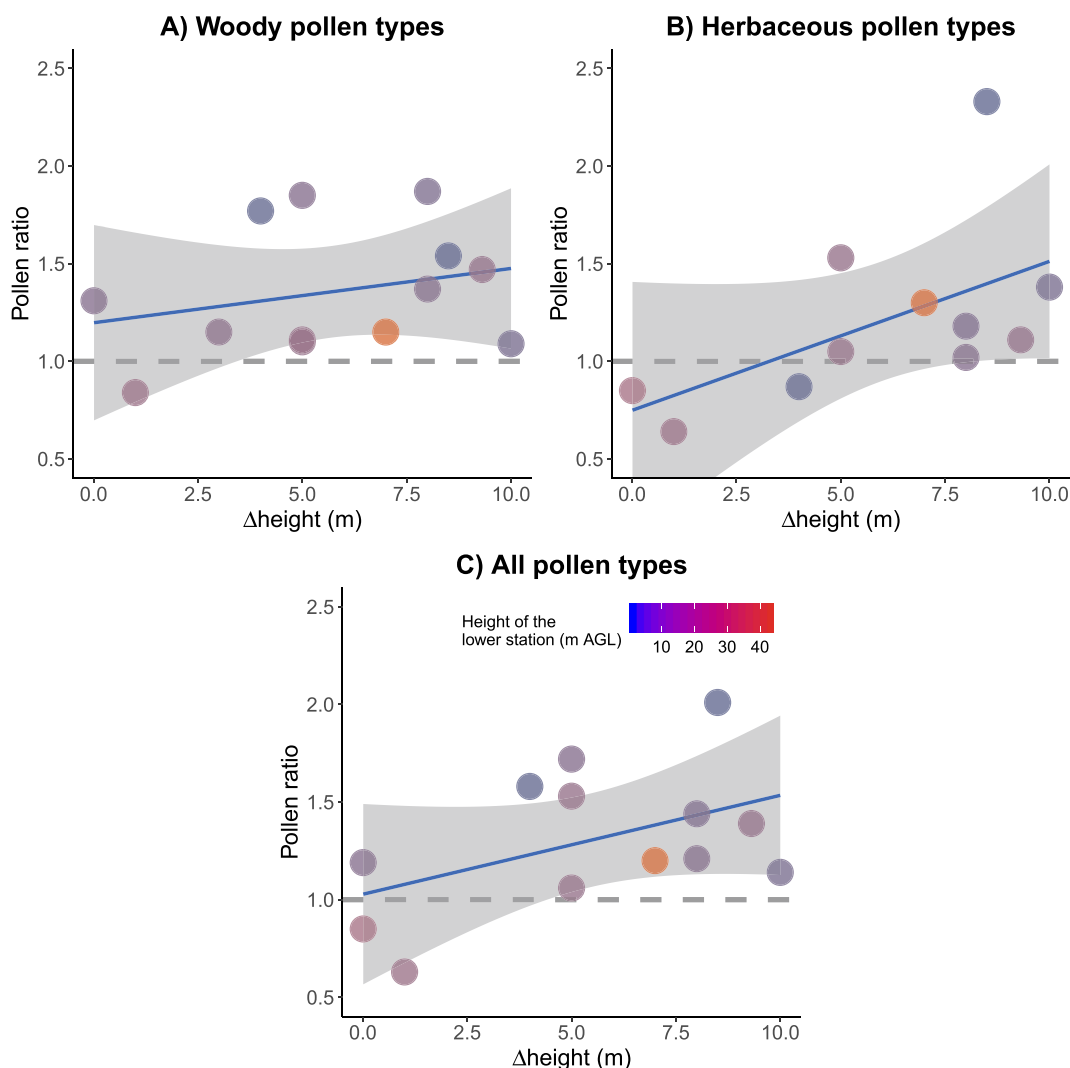


Fig. 2. Relationship between the mean pollen ratio and the height difference between paired-stations, only for the range of height difference 0–10 m.

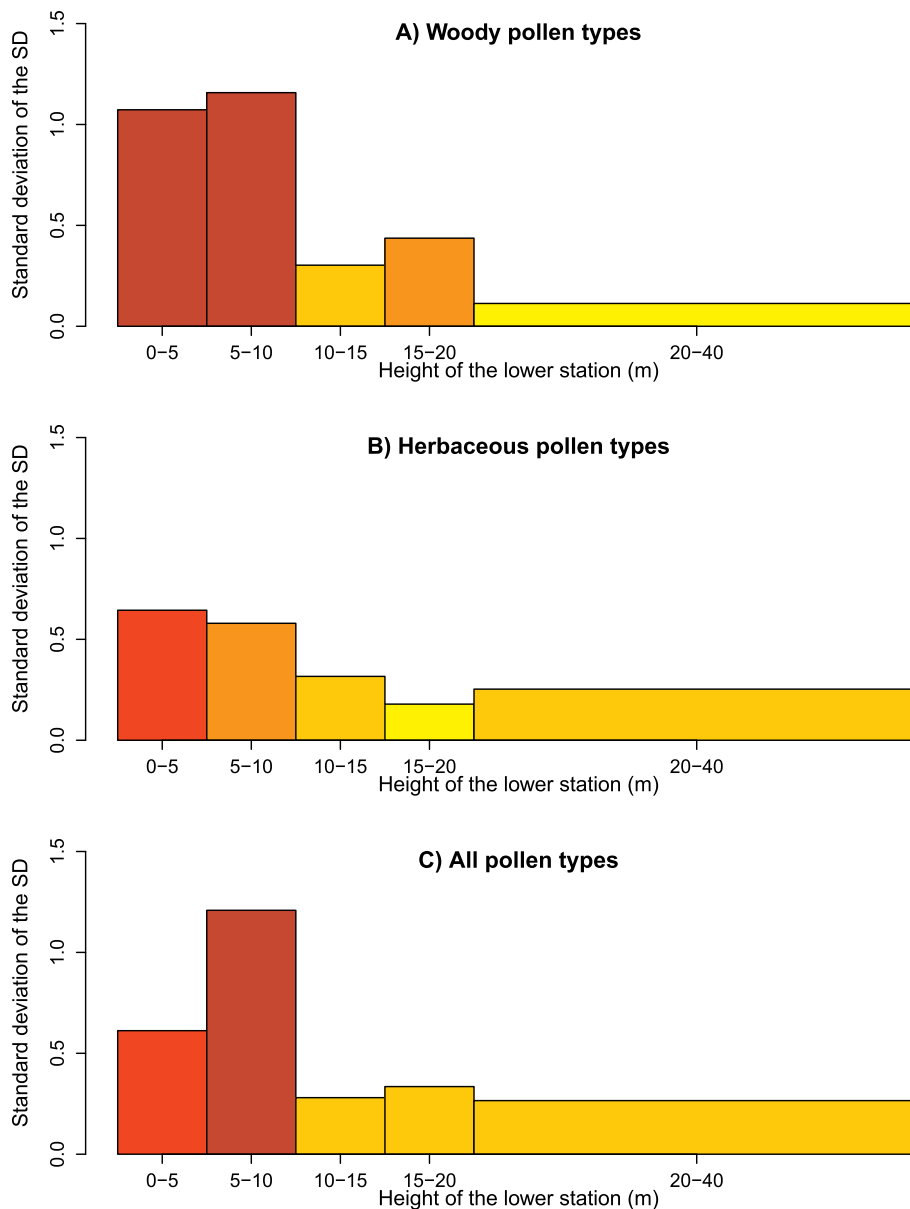


Fig. 3. Relationship between the standard deviation of the standard deviation (SD) of the mean pollen ratio and the height of the lower station for (A) woody, (B) herbaceous and (C) all pollen types. This figure shows the SD of Fig. 1 (D–F) and supports the minimum height for the lower station of > 10 m AGL as this reduces the variability of the measurements.

concentrations from a certain height tend to stabilize and the height effect loses relevance (Raynor et al., 1973), as for other aerosols (Brady et al., 2016). Our hypothesis that pollen concentrations would vary vertically between near-ground and 50 m was supported by the results. However, the effect of height on pollen concentrations was limited, and was mainly determined by differences within the first 10 m above ground.

The results indicate that the pollen concentrations are much more homogenous above 10 m AGL, where most pollen stations in urban areas are localized. This suggests that if the purpose of a pollen trap is to provide representative data for a relatively large geographical region in an urbanized area (Velasco-Jiménez et al., 2013), then it should be placed on a building at least 10 m AGL, i.e. this height could be considered as the minimum optimal height to locate stations for pollen sampling. A consequence of such a placement is that local effects are less likely to be detected by the trap and thus pollen stations above this height analyze airborne pollen in more homogeneous conditions. The optimal height for the location of a sampler also depends on the urban

design (Galán et al., 2014). Therefore the sampler should be located away from the edge of a building and away from higher surrounding buildings avoiding the effect of turbulence due to urban canyon influence (Peel et al., 2014a). Thus, local building structure can demand placements of a trap substantially above 10 m AGL. Supporting our results, similar considerations are followed by the World Meteorological Organisation to locate anemometers for measuring wind speed and direction, including an optimal height above 10 m AGL (WMO, 2017). However, our results show that the influence of the height on pollen sampling is getting smaller above 10 m AGL. On the other hand, traps used for other purposes could be placed near the surface where airborne particles are emitted for the assessment of the spatial distribution of the allergenic flora (Hjort et al., 2016; Werchan et al., 2018), the control of the levels of pathogens in agriculture (Fernandez-Gonzalez et al., 2013) or the study of the fluxes of pollen emission and deposition near the pollen sources (Jarosz et al., 2005).

The results also show that the effect of height on pollen sampling is independent of the pollen type considered. Most woody and herbaceous

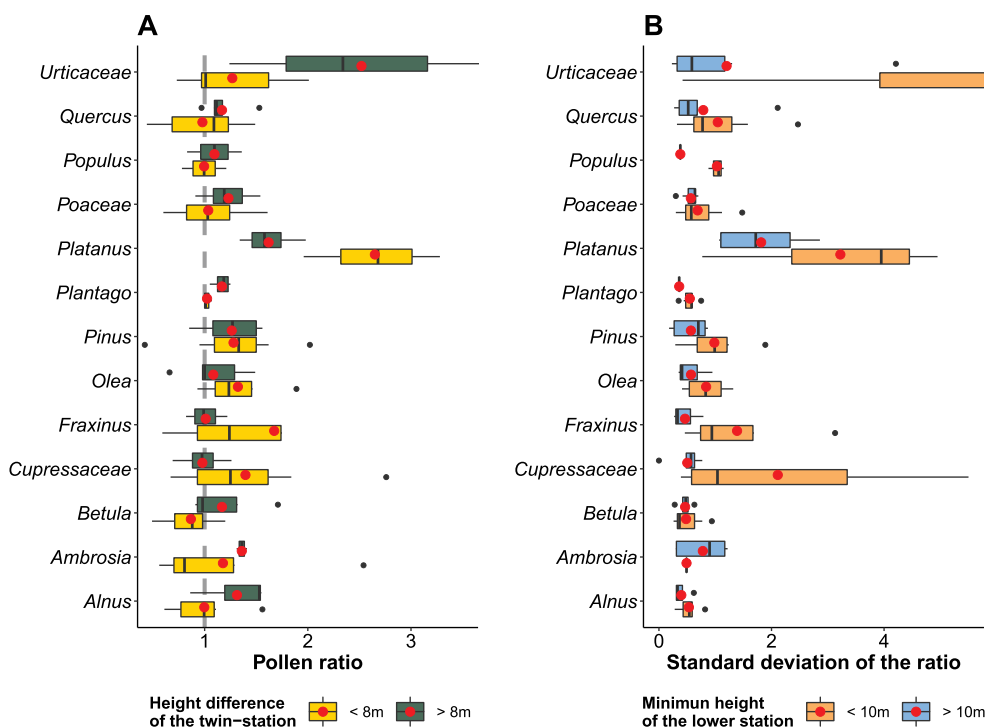


Fig. 4. Boxplots comparing the mean pollen ratio depending on: (A) Δ height or (B) height of the lower station.

pollen types showed a similar pattern in the relationships between the mean pollen ratio or the standard deviation and the differences in height on sampling (Supplementary Material, Figure S3). Only pollen types such as *Platanus*, Cupressaceae or *Olea* showed a different pattern which can also be observed in Fig. 4A and Supplementary Material. In Fig. 4A, these pollen types showed higher pollen ratio when the height difference of the paired-stations decreased, contrary to other pollen types.

We expected relevant differences between herbaceous and woody species whose lifeform determines the height from which pollen is released (Fernández-Illescas et al., 2010). However, no clear differences are reported in our work with respect to the near-ground vertical profile of pollen concentrations (Fig. 1A–C). Herbaceous species showed a much lower standard deviation below 10 m AGL than woody pollen types (Fig. 3), and these results could be related to the different phenomena of pollen release, which is upward from the ground level in herbaceous plants while for woody species the pollen are dropped from trees. Ranta et al. (2008) reported that the percentage of the tree pollen was higher in the atmosphere than at ground level deposition, and pollen coming from herbaceous plant and other low-growing plants are more represented in deposition samples. Thus, the presence of tree pollen below 10 m AGL depends more of dynamics that influence the deposition or dispersal (wind) of pollen.

Platanus and Cupressaceae were the pollen types that showed the greatest number of differences in pollen ratio, compared to the other types (Table 2). It is remarkable that pollen types showing the highest differences in ratio represent the main pollen grains coming from ornamental plants in many urban green zones of the cities. *Platanus* trees and Cupressaceae species are important urban planted ornamental species in the western Mediterranean region (Cariñanos et al., 2017; Cariñanos and Casares-Porcel, 2011; Sánchez-Reyes et al., 2009), and thus, the pollen sources in this case would be near to the urban stations. Pollen types coming from species that grow abundantly in urban and natural environments, and thus more widespread, could exhibit different vertical distribution profiles than species planted predominantly near urban areas.

These results also indicate the importance of the distance from the

pollen source to be considered on the effect of height on air sampling. Local emissions near the pollen stations will intensify the effect between paired stations and probably an increased pollen concentration can be expected at ground level (Šikoparija et al., 2018). Adams-Groom et al. (2017) indicated that most pollen is deposited at the first few meters from the pollen sources. In a same way, air in the first few meters above ground level from the pollen source would contain much greater quantities of pollen than higher heights resulting in severe differences in height ratios for places close to the pollen sources (Raynor et al., 1968; Jarosz et al., 2005; Katz and Carey, 2014). Otherwise, long-distance transport of pollen can be important in specific situations being responsible of high proportions of allergenic pollen from external sources (Izquierdo et al., 2011). We expect that the amounts of pollen coming from distant pollen sources would reduce the effect of the height on pollen measurements because long-range wind-transported pollen would come from high elevations (Makra et al., 2016), on the contrary as could be thought from local sources. The distance from the pollen source is an important factor influencing the pollen ratio, and will overlap with the effect of height on pollen sampling (Spieksma et al., 2000).

Apart from height or distance to a local source like ornamental plants, other factors can influence the ratio of pollen concentrations between stations too. These factors are topography, hour of day (Rantio-Lehtimäki et al., 1991; Alcázar et al., 1999b; Noh et al., 2013), period of season considered (Peel et al., 2014b), or meteorological conditions of the atmosphere (Ríos et al., 2016; Skjøth et al., 2013), especially wind direction and speed, ambient humidity or rainfall which determines the pollen dispersal capacity in the air (Pérez et al., 2009; Rojo et al., 2015).

It is remarkable that side by side stations located at the same height (Δ height = 0 m), such as in Munich, Germany or Zrenjanin, Serbia (Table 1) showed pollen ratios different to 1 (Fig. 1A–C). Although pollen concentrations between pollen traps located at the same height were not significantly different (Giorato et al., 2003; Irdi et al., 2002; Velasco-Jiménez et al., 2013), certain level of variability for daily pollen data was observed in our results (Fig. 5). Therefore, the standard deviation of Hirst-type traps in the analysis of Munich (Germany) and

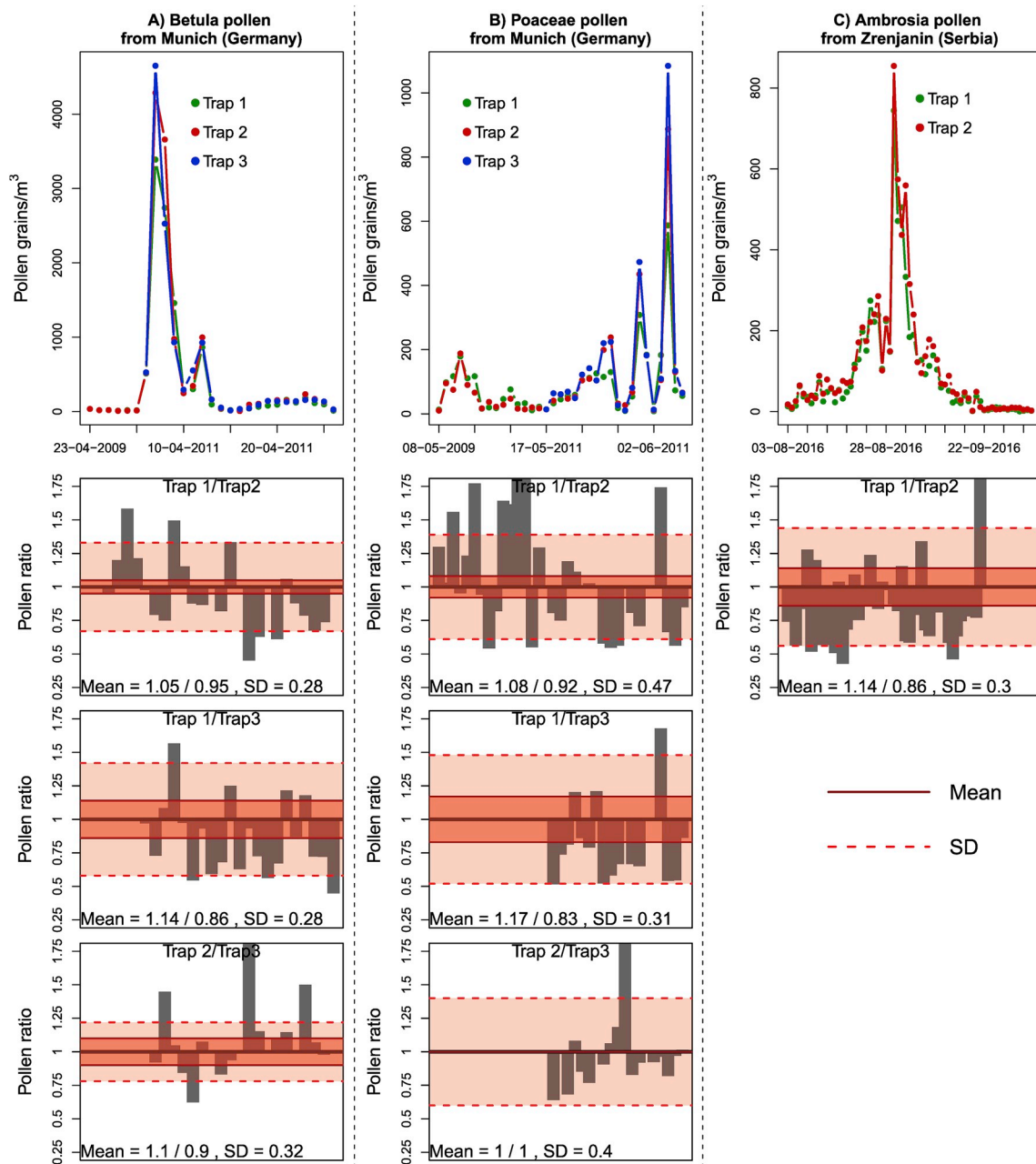


Fig. 5. Mean pollen ratio and standard deviation calculated for the pollen concentrations registered by pollen traps located at the same height and location. This special case was studied for three stations in Munich (Germany) (A, B) and two stations in Zrenjanin (Serbia) (C). The standard deviation of Hirst-type traps in this analysis was 34% on average. Values of < 10 pollen/m³ were not considered.

Zrenjanin (Serbia) was 0.34 (34%) on average, being the maximum uncertainty estimated by Pedersen and Moseholm (1993) in a similar approach. The value of the standard deviation from daily pollen ratio showed an important daily variation despite that the mean pollen ratio was near to 1 (0.83–1.17) i.e. the mean pollen concentrations were similar for both paired stations. This fact explains why no significant differences were found in previous works (Tormo-Molina et al., 2013). The daily variability observed could be explained by random variations caused by instrumental error but could also be influenced again by meteorological conditions (Pedersen and Moseholm, 1993). All samples between paired stations were processes and counted at the same laboratory and the error is independent of the interlaboratory variability.

In conclusion, the effect of height of air sampling between stations is only one of the factors which influences the pollen ratio between paired stations, together with other factors such as the height of the lower

station or the distance between the stations. The data shows that the effect of sampling pollen at different heights is clear but limited, and that pollen concentrations are much more homogenous above 10 m AGL. Thus, depending on the purpose of the trap, the optimal height of a pollen monitor could be > 10 m AGL. These findings reveal the importance of the vertical distribution of bioaerosols and further contribute to the study of the general pattern of pollen exposure at ground level and, hence, are highly relevant to clinical practice. Until now, the results of our study constitute the most complete estimation of the variability of the near-ground vertical profile of airborne pollen.

Acknowledgment

Ingrid Weichenmeier, Christine Weil and Gudrun Pusch are greatly acknowledged for their help in counting pollen for so many years. Also

the acknowledgment to the personnel responsible of the rest of research groups.

Appendix A. Supplementary data

Supplementary data to this article can be found online at <https://doi.org/10.1016/j.envres.2019.04.027>.

Funding sources

The work was funded by ZAUM- Center of Allergy & Environment of the Technical University Munich/Helmholtzzentrum Munich and the Bavarian State Ministry of Health and Care grant ePIN-Valid.

Declaration of competing financial interests (CFI).

The authors declare they have no actual or potential competing financial interests.

References

- Adams-Groom, B., Skjøth, C.A., Baker, M., Welch, T.E., 2017. Modelled and observed surface soil pollen deposition distance curves for isolated trees of *Carpinus betulus*, *Cedrus atlantica*, *Juglans nigra* and *Platanus acerifolia*. *Aerobiologia* 33, 407–416. <https://doi.org/10.1007/s10453-017-9479-1>.
- Alcazar, P., Comtois, P., 2000. The influence of sampler height and orientation on airborne Ambrosia pollen counts in Montreal. *Grana* 39, 303–307. <https://doi.org/10.1080/00173130052504342>.
- Alcázar, P., Galán, C., Cariñanos, P., Domínguez-Vilches, E., 1999a. Effects of sampling height and climatic conditions in aerobiological studies. *J. Investig. Allergol. Clin. Immunol.* 9, 253–261.
- Alcázar, P., Galán, C., Cariñanos, P., Domínguez-Vilches, E., 1999b. Diurnal variation of airborne pollen at two different heights. *J. Investig. Allergol. Clin. Immunol.* 9, 89–95.
- Barbosa, C.G.G., Taylor, P.E., de Souza, R.A.F., Pöhlker, C., Andreae, M.O., Godoi, R.H.M., 2018. Vertical transport of primary biological aerosols emitted from the Amazon rainforest. In: 14th Quadrennial Symposium ICACGP and 15th Science Conference IGAC. Takamatsu Kagawa, Japan.
- Borycka, K., Kasprzyk, I., 2018. Hourly pattern of allergenic alder and birch pollen concentrations in the air: spatial differentiation and the effect of meteorological conditions. *Atmos. Environ.* 182, 179–192. <https://doi.org/10.1016/j.atmosenv.2018.03.048>.
- Brady, J.M., Stokes, M.D., Bonnardel, J., Bertram, T.H., 2016. Characterization of a quadrotor unmanned aircraft system for aerosol-particle-concentration measurements. *Environ. Sci. Technol.* 50, 1376–1383. <https://doi.org/10.1021/acs.est.5b05320>.
- Bryant, R.H., Emberlin, J.C., Norris-Hill, J., 1989. Vertical variation in pollen abundance in North-Central London. *Aerobiologia* 5, 123–137. <https://doi.org/10.1007/BF02486510>.
- Buters, J.T.M., Antunes, C., Galveias, A., Bergmann, K.C., Thibaudon, M., Galán, C., Schmidt-Weber, C., Oteros, J., 2018. Pollen and spore monitoring in the world. *Clin. Transl. Allergy* 8. <https://doi.org/10.1186/s13601-018-0197-8>.
- Buters, J., Prank, M., Sofiev, M., Pusch, G., Albertini, R., Annesi-Maesano, I., Antunes, C., Behrendt, H., Berger, U., Brandao, R., Celenk, S., Galan, C., Grewling, L., Jackowiak, B., Kennedy, R., Rantio-Lehtimäki, A., Reese, G., Sauliene, I., Smith, M., Thibaudon, M., Weber, B., Cecchi, L., 2015. Variation of the group 5 grass pollen allergen content of airborne pollen in relation to geographic location and time in season. *J. Allergy Clin. Immunol.* 136, 87–95. <https://doi.org/10.1016/j.jaci.2015.01.049>.
- Buters, J., Thibaudon, M., Smith, M., Kennedy, R., Rantio-Lehtimäki, A., Albertini, R., et al., 2012. Release of Bet v 1 from birch pollen from 5 European countries. Results from the HIALINE study. *Atmos. Environ.* 55, 496–505. <https://doi.org/10.1016/j.atmosenv.2012.01.054>.
- Cariñanos, P., Casares-Porcel, M., 2011. Urban green zones and related pollen allergy: a review. Some guidelines for designing spaces with low allergy impact. *Landscape Urban Plann.* 101, 205–214. <https://doi.org/10.1016/j.landurbplan.2011.03.006>.
- Cariñanos, P., Casares-Porcel, M., Diaz de la Guardia, C., Aira, M.J., Belmonte, J., Boi, M., Elvira-Rendueles, B., De Linares, C., Fernández-Rodríguez, S., Maya-Manzano, J.M., Pérez-Badía, R., Rodríguez-de la Cruz, D., Rodríguez-Rajo, F.J., Rojo-Úbeda, J., Romero-Zarco, C., Sánchez-Reyes, E., Sánchez-Sánchez, J., Tormo-Molina, R., Vega Maray, A.M., 2017. Assessing allergenicity in urban parks: a nature-based solution to reduce the impact on public health. *Environ. Res.* 155, 219–227. <https://doi.org/10.1016/j.envres.2017.02.015>.
- Cecchi, L., D'Amato, G., Ayres, J.G., Galán, C., Forastiere, F., Forsberg, B., et al., 2010. Projections of the effects of climate change on allergic asthma: the contribution of aerobiology: climate change and aerobiology. *Allergy* 65, 1073–1081. <https://doi.org/10.1111/j.1398-9995.2010.02423.x>.
- Chakraborty, P., Gupta-Bhattacharya, S., Chowdhury, I., Majumdar, M.R., Chanda, S., 2001. Differences in concentrations of allergenic pollens and spores at different heights on an agricultural farm in West Bengal, India. *Ann. Agric. Environ. Med.* 8, 123–130.
- Chan, L., Kwok, W., 2000. Vertical dispersion of suspended particulates in urban area of Hong Kong. *Atmos. Environ.* 34, 4403–4412. [https://doi.org/10.1016/S1352-2310\(00\)00181-3](https://doi.org/10.1016/S1352-2310(00)00181-3).
- Charalampopoulos, A., Lazarina, M., Tsiripidis, I., Vokou, D., 2018. Quantifying the relationship between airborne pollen and vegetation in the urban environment. *Aerobiologia* 34, 285–300. <https://doi.org/10.1007/s10453-018-9513-y>.
- Cole-Hunter, T., de Nazelle, A., Donaire-Gonzalez, D., Kubesch, N., Carrasco-Turigas, G., Matt, F., Foraster, M., Martínez, T., Ambros, A., Cirach, M., Martínez, D., Belmonte, J., Nieuwenhuijsen, M., 2018. Estimated effects of air pollution and space-time-activity on cardiopulmonary outcomes in healthy adults: a repeated measures study. *Environ. Int.* 111, 247–259. <https://doi.org/10.1016/j.envint.2017.11.024>.
- Comtois, P., Alcázar, P., Néron, D., 1999. Pollen counts statistics and its relevance to precision. *Aerobiologia* 15, 19–28. <https://doi.org/10.1023/A:1007501017470>.
- Comtois, P., Fernández-González, D., Valencia-Barrera, R.M., Sánchez, J.L., Fraile, R., Rodier, S., 2000. Pollen content study of the lower atmosphere in León (Spain) by use of a tethered balloon. *Aerobiologia* 16, 187–191. <https://doi.org/10.1023/A:1007685513925>.
- Cotos-Yáñez, T.R., Rodríguez-Rajo, F.J., Pérez-González, A., Aira, M.J., Jato, V., 2013. Quality control in aerobiology: comparison different slide reading methods. *Aerobiologia* 29, 1–11. <https://doi.org/10.1007/s10453-012-9263-1>.
- Damialis, A., Kaimakamis, E., Konoglou, M., Akritidis, I., Traidl-Hoffmann, C., Gioulekas, D., 2017. Estimating the abundance of airborne pollen and fungal spores at variable elevations using an aircraft: how high can they fly? *Sci. Rep.* 7, 44535. <https://doi.org/10.1038/srep44535>.
- European Academy of Allergy and Clinical Immunology, 2015. *Advocacy Manifesto Tackling the Allergy Crisis in Europe - Concerted Policy Action Needed*. Brussels, Belgium.
- Fernandez-Gonzalez, M., Rodriguez-Rajo, F.J., Escuredo, O., Aira, M.J., 2013. Optimization of integrated pest management for powdery mildew (*Unicula necator*) control in a vineyard based on a combination of phenological, meteorological and aerobiological data. *J. Agric. Sci.* 151, 648–658. <https://doi.org/10.1017/S0021859612000743>.
- Fernández-Illescas, F., Nieva, F.J.J., Silva, I., Tormo, R., Muñoz, A.F., 2010. Pollen production of Chenopodiaceae species at habitat and landscape scale in Mediterranean salt marshes: an ecological and phenological study. *Rev. Palaeobot. Palynol.* 161, 127–136. <https://doi.org/10.1016/j.revpaalbo.2010.03.006>.
- Fernández-Rodríguez, S., Durán-Barroso, P., Silva-Palacios, I., Tormo-Molina, R., Maya-Manzano, J.M., Gonzalo-Garijo, Á., Monroy-Colin, A., 2018. Environmental assessment of allergenic risk provoked by airborne grass pollen through forecast model in a Mediterranean region. *J. Clean. Prod.* 176, 1304–1315. <https://doi.org/10.1016/j.jclepro.2017.11.226>.
- Fernández-Rodríguez, S., Tormo-Molina, R., Maya-Manzano, J.M., Silva-Palacios, I., Gonzalo-Garijo, Á., 2014. A comparative study on the effects of altitude on daily and hourly airborne pollen counts. *Aerobiologia* 30, 257–268. <https://doi.org/10.1007/s10453-014-9325-7>.
- Fiorina, A., Mincirini, M., Sivori, M., Scordamaglia, A., Canonica, G.W., Bricchetto, L., 1999. Aeropollinic sampling at three different heights by personal volumetric collector (Partrap FA 52). *Allergy* 54, 1309–1315.
- Fugiel, A., Burchart-Korol, D., Czaplicka-Kolarz, K., Smoliński, A., 2017. Environmental impact and damage categories caused by air pollution emissions from mining and quarrying sectors of European countries. *J. Clean. Prod.* 143, 159–168. <https://doi.org/10.1016/j.jclepro.2016.12.136>.
- Galán, C., Alcázar-Teno, P., Domínguez-Vilches, E., de la Torre, F.V., Garcia-Pantaleon, F.I., 1995. Airborne pollen grain concentrations at two different heights. *Aerobiologia* 11, 105–109.
- Galán, C., Smith, M., Thibaudon, M., Frenguelli, G., Oteros, J., Gehrig, R., Berger, U., Clot, B., Brandao, R., EAS QC Working Group, 2014. Pollen monitoring: minimum requirements and reproducibility of analysis. *Aerobiologia* 30, 385–395. <https://doi.org/10.1007/s10453-014-9335-5>.
- Giorato, M., Bordin, A., Gemignani, C., Turatello, F., Marcer, G., 2003. Airborne pollen in Padua (NE-Italy): a comparison between two pollen samplers. *Aerobiologia* 19, 129–131.
- Gregory, P.H., 1978. Distribution of airborne pollen and spores and their long distance transport. *Pure Appl. Geophys. PAGEOPH* 116, 309–315. <https://doi.org/10.1007/BF01636888>.
- Gruber, S., Matthias-Maser, S., Brinkmann, J., Jaenicke, R., 1998. Vertical distribution of biological aerosol particles above the North Sea. *J. Aerosol Sci.* S771–S772.
- Hertel, O., Jensen, S.S., Ketzler, M., Becker, T., Peel, R.G., Orby, P.V., Skjøth, C.A., Ellermann, T., Raaschou-Nielsen, O., Sorensen, M., Brauner, E.V., Andersen, Z.J., Loft, S., Schlunssen, V., Bonlokke, J.H., Sigsgaard, T., 2013. Utilizing monitoring data and spatial analysis tools for exposure assessment of atmospheric pollutants in Denmark. In: McConnell, L.L., Dachs, J., Hapeman, C.J. (Eds.), *Occurrence, Fate and Impact of Atmospheric Pollutants on Environmental and Human Health*. Amer. Chem. Soc. Washington, pp. 95–122.
- Hirst, J.M., 1952. An automatic volumetric spore trap. *Ann. Appl. Biol.* 39, 257–265. <https://doi.org/10.1111/j.1744-7348.1952.tb00904.x>.
- Hjort, J., Hugg, T.T., Antikainen, H., Rusanen, J., Sofiev, M., Kukkonen, J., Jaakkola, M.S., Jaakkola, J.J.K., 2016. Fine-scale exposure to allergenic pollen in the urban environment: evaluation of land use regression approach. *Environ. Health Perspect.* 124, 619–626. <https://doi.org/10.1289/ehp.1509761>.
- Irdi, G.A., Jones, J.R., White, C.M., 2002. Pollen and fungal spore sampling and analysis. Statistical evaluations. *Grana* 41, 44–47.
- Izquierdo, R., Belmonte, J., Avila, A., Alarcón, M., Cuevas, E., Alonso-Pérez, S., 2011. Source areas and long-range transport of pollen from continental land to Tenerife (Canary Islands). *Int. J. Biometeorol.* 55, 67–85.

- Jäger, S., Mandrioli, P., Spiekma, F., Emberlin, J., Hjelmroos, M., Rantio-Lehtimäki, A., Domínguez-Vilches, E., Ickovic, M.-R., 1995. Methodology for routinely performed monitoring of airborne pollen recommendations. *Aerobiologia* 11, 69. <https://doi.org/10.1007/BF02136148>.
- Jarosz, N., Loubet, B., Durand, B., Foueillassar, X., Huber, L., 2005. Variations in maize pollen emission and deposition in relation to microclimate. *Environ. Sci. Technol.* 39, 4377–4384. <https://doi.org/10.1021/es0494252>.
- Katz, D.S.W., Carey, T.S., 2014. Heterogeneity in ragweed pollen exposure is determined by plant composition at small spatial scales. *Sci. Total Environ.* 485–486, 435–440. <https://doi.org/10.1016/j.scitotenv.2014.03.099>.
- Khattab, A., Levetin, E., 2008. Effect of sampling height on the concentration of airborne fungal spores. *Ann. Allergy Asthma Immunol.* 101, 529–534.
- Lake, I.R., Jones, N.R., Agnew, M., Goodess, C.M., Giorgi, F., Hamaoui-Laguel, L., Semenov, M.A., Solomon, F., Storkey, J., Vautard, R., Epstein, M.M., 2017. Climate change and future pollen allergy in Europe. *Environ. Health Perspect.* 125, 385–391. <https://doi.org/10.1289/EHP173>.
- Makra, L., Matyasovszky, I., Tusnády, G., Wang, Y., Csépe, Z., Bozóki, Z., Nyúl, L.G., Erostyák, J., Bodnár, K., Sümegy, Z., Vogel, H., Pauling, A., Páldy, A., Magyar, D., Mányoki, G., Bergmann, K.-C., Bonini, M., Šikoparija, B., Radišić, P., Gehrig, R., Seliger, A.K., Stjepanović, B., Rodinkova, V., Prikhodko, A., Maleeva, A., Severova, E., Ščevková, J., Ianovici, N., Peternel, R., Thibaudon, M., 2016. Biogeographical estimates of allergenic pollen transport over regional scales: Common ragweed and Szeged, Hungary as a test case. *Agric. For. Meteorol.* 221, 94–110. <https://doi.org/10.1016/j.agrformet.2016.02.006>.
- Makra, L., Santa, T., Matyasovszky, I., Damialis, A., Karatzas, K., Bergmann, K.-C., Vokou, D., 2010. Airborne pollen in three European cities: Detection of atmospheric circulation pathways by applying three-dimensional clustering of backward trajectories. *J. Geophys. Res.-Atmospheres* 115, D24220. <https://doi.org/10.1029/2010JD014743>.
- Myszowska, D., Stępańska, D., Dyga, W., Bokalska-Rajba, J., Czarnobilska, E., 2012. Survey of biological particles in the atmosphere of the Cracow center (southern Poland) in 2011. Preliminary study. *Przegl. Lek.* 69, 1254–1260.
- Noh, Y.M., Lee, H., Mueller, D., Lee, K., Shin, D., Shin, S., Choi, T.J., Choi, Y.J., Kim, K.R., 2013. Investigation of the diurnal pattern of the vertical distribution of pollen in the lower troposphere using LIDAR. *Atmos. Chem. Phys.* 13, 7619–7629. <https://doi.org/10.5194/acp-13-7619-2013>.
- Orlanski, I., 1975. A rational subdivision of scales for atmospheric processes. *Bull. Am. Meteorol. Soc.* 56, 527–530. <https://doi.org/www.jstor.org/stable/26216020>.
- Oteros, J., Buters, J., Laven, G., Röseler, S., Wachter, R., Schmidt-Weber, C., Hofmann, F., 2017. Errors in determining the flow rate of Hirst-type pollen traps. *Aerobiologia* 33, 201–210. <https://doi.org/10.1007/s10453-016-9467-x>.
- Oteros, J., Galán, C., Alcázar, P., Domínguez-Vilches, E., 2013. Quality control in bio-monitoring networks, Spanish Aerobiology Network. *Sci. Total Environ.* 443, 559–565. <https://doi.org/10.1016/j.scitotenv.2012.11.040>.
- Pawankar, R., Canonica, G.W., Holgate, S.T., Lockey, R.F., Blaiss, M., 2013. World Allergy Organisation (WAO) White Book on Allergy: Update 2013. Milwaukee World Allergy Organ.
- Pedersen, B.V., Moseholm, L., 1993. Precision of the daily pollen count. Identifying sources of variation using variance component models. *Aerobiologia* 9, 15–26.
- Peel, R.G., Hertel, O., Smith, M., Kennedy, R., 2013. Personal exposure to grass pollen: relating inhaled dose to background concentration. *Ann. Allergy Asthma Immunol.* 111, 548–554. <https://doi.org/10.1016/j.anaai.2013.09.002>.
- Peel, R.G., Kennedy, R., Smith, M., Hertel, O., 2014a. Do urban canyons influence street level grass pollen concentrations? *Int. J. Biometeorol.* 58, 1317–1325. <https://doi.org/10.1007/s00484-013-0728-x>.
- Peel, R.G., Ørby, P.V., Skjøth, C.A., Kennedy, R., Schnüsslen, V., Smith, M., Sommer, J., Hertel, O., 2014b. Seasonal variation in diurnal atmospheric grass pollen concentration profiles. *Biogeosciences* 11, 821–832. <https://doi.org/10.5194/bg-11-821-2014>.
- Penel, V., Calleja, M., Pichot, C., Charpin, D., 2017. Static and elevated pollen traps do not provide an accurate assessment of personal pollen exposure. *Eur. Ann. Allergy Clin. Immunol.* 49, 59–65.
- Pérez, C.F., Gassmann, M.I., Covi, M., 2009. An evaluation of the airborne pollen–precipitation relationship with the superposed epoch method. *Aerobiologia* 25, 313–320. <https://doi.org/10.1007/s10453-009-9135-5>.
- R Development Core Team, 2017. R: A Language and Environment for Statistical Computing. The R Foundation for Statistical Computing, Vienna, Austria.
- Ranta, H., Sokol, C., Hicks, S., Heino, S., Kubin, E., 2008. How do airborne and deposition pollen samplers reflect the atmospheric dispersal of different pollen types? An example from northern Finland. *Grana* 47, 285–296. <https://doi.org/10.1080/00173130802457230>.
- Rantio-Lehtimäki, A., Helander, M.L., Pessi, A.-M., 1991. Circadian periodicity of airborne pollen and spores; significance of sampling height. *Aerobiologia* 7, 129–135. <https://doi.org/10.1007/BF02270681>.
- Raynor, G.S., Ogden, E.C., Hayes, J.V., 1973. Variation in ragweed pollen concentration to a height of 108 meters. *J. Allergy Clin. Immunol.* 51, 199–207.
- Raynor, G.S., Ogden, E.C., Hayes, J.V., 1968. Effect of a local source on ragweed pollen concentrations from background sources. *J. Allergy* 41, 217–225.
- Reinmuth-Selzle, K., Kampf, C.J., Lucas, K., Lang-Yona, N., Fröhlich-Nowoisky, J., Shiraiwa, M., Lakey, P.S.J., Lai, S., Liu, F., Kunert, A.T., Ziegler, K., Shen, F., Sgarbanti, R., Weber, B., Bellinghausen, I., Saloga, J., Weller, M.G., Duschl, A., Schuppan, D., Pöschl, U., 2017. Air pollution and climate change effects on allergens in the anthropocene: abundance, interaction, and modification of allergens and adjuvants. *Environ. Sci. Technol.* 51, 4119–4141. <https://doi.org/10.1021/acs.est.6b04908>.
- Ríos, B., Torres-Jardón, R., Ramírez-Arriaga, E., Martínez-Bernal, A., Rosas, I., 2016. Diurnal variations of airborne pollen concentration and the effect of ambient temperature in three sites of Mexico City. *Int. J. Biometeorol.* 60, 771–787. <https://doi.org/10.1007/s00484-015-1061-3>.
- Rodríguez de la Cruz, D., Dávila, I., Sánchez-Reyes, E., Lorente, F., Sánchez, J.S., 2016. Comparison of pollen levels between 2 pollen traps in Salamanca, Spain. *J. Investig. Allergol. Clin. Immunol.* 26, 111–143.
- Rojo, J., Rapp, A., Lara, B., Fernández-González, F., Pérez-Badia, R., 2015. Effect of land uses and wind direction on the contribution of local sources to airborne pollen. *Sci. Total Environ.* 538, 672–682. <https://doi.org/10.1016/j.scitotenv.2015.08.074>.
- Rojo, J., Serrano-Bravo, M.D., Lara, B., Fernández-González, F., Pérez-Badia, R., 2019. Halo-nitrophilous scrub species and their relationship to the atmospheric concentration of allergenic pollen: case study of the Mediterranean saltbush (*Atriplex halimus* L., Amaranthaceae). *Plant. Biosyst. Int. J. Deal. Asp. Plant. Biol.* 153, 98–107. <https://doi.org/10.1080/11263504.2018.1461699>.
- Romero-Morte, J., Rojo, J., Rivero, R., Fernández-González, F., Pérez-Badia, R., 2018. Standardised index for measuring atmospheric grass-pollen emission. *Sci. Total Environ.* 612, 180–191. <https://doi.org/10.1016/j.scitotenv.2017.08.139>.
- Salmund, J.A., Williams, D.E., Laing, G., Kingham, S., Dirks, K., Longley, I., Henshaw, G.S., 2013. The influence of vegetation on the horizontal and vertical distribution of pollutants in a street canyon. *Sci. Total Environ.* 443, 287–298. <https://doi.org/10.1016/j.scitotenv.2012.10.101>.
- Sánchez-Reyes, E., Rodríguez de la Cruz, D., Sanchis-Merino, M.E., Sánchez-Sánchez, J., 2009. First results of Platanus pollen airborne content in the middle-west of the Iberian Peninsula. *Aerobiologia* 25, 209.
- Sénéchal, H., Vizez, N., Charpin, D., Shahali, Y., Peltre, G., Biolley, J.-P., Lhuissier, F., Couderc, R., Yamada, O., Malrat-Domenge, A., Pham-Thi, N., Poncet, P., Sutra, J.-P., 2015. A review of the effects of major atmospheric pollutants on pollen grains, pollen content, and allergenicity. *Sci. World J.* 1–29. <https://doi.org/10.1155/2015/940243>.
- Šikoparija, B., Galán, C., Smith, M., EAS QC Working Group, 2017. Pollen-monitoring: between analyst proficiency testing. *Aerobiologia* 33, 191–199. <https://doi.org/10.1007/s10453-016-9461-3>.
- Šikoparija, B., Mimić, G., Panić, M., Marko, O., Radišić, P., Pejak-Šikoparija, T., Pauling, A., 2018. High temporal resolution of airborne Ambrosia pollen measurements above the source reveals emission characteristics. *Atmos. Environ.* 193, 13–23. <https://doi.org/10.1016/j.atmosenv.2018.08.040>.
- Skjøth, C.A., Ørby, P.V., Becker, T., Geels, C., Schlüsslen, V., Sigsgaard, T., Bønløkke, J.H., Sommer, J., Søgaard, P., Hertel, O., 2013. Identifying urban sources as cause of elevated grass pollen concentrations using GIS and remote sensing. *Biogeosciences* 10, 541–554.
- Spiekma, F.T.M., van Noort, P., Nikkels, H., 2000. Influence of nearby stands of *Artemisia* on street-level versus roof-top-level ratio's of airborne pollen quantities. *Aerobiologia* 16, 21–24.
- Tormo-Molina, R., Maya Manzano, J.M., Fernandez Rodriguez, S., Gonzalo Garijo, Á., Silva Palacios, I., 2013. Influence of environmental factors on measurements with Hirst spore traps. *Grana* 52, 59–70. <https://doi.org/10.1080/00173134.2012.718359>.
- Velasco-Jiménez, M.J., Alcázar, P., Domínguez-Vilches, E., Galán, C., 2013. Comparative study of airborne pollen counts located in different areas of the city of Córdoba (south-western Spain). *Aerobiologia* 29, 113–120. <https://doi.org/10.1007/s10453-012-9267-x>.
- Werchan, B., Werchan, M., Mücke, H.-G., Bergmann, K.-C., 2018. Spatial Distribution of Pollen-Induced Symptoms within a Large Metropolitan Area—Berlin. *Aerobiologia*, Germany. <https://doi.org/10.1007/s10453-018-9529-3>.
- WMO, World Meteorological Organization, 2017. Guide to Meteorological Instruments and Methods of Observations. Annex 1.B. Siting Classifications for Surface Observing Stations on Land. WMO-No. 8, 2014 edition, updated in 2017. <https://library.wmo.int>, Accessed date: 8 March 2019.
- Xiao, X., Fu, A., Xie, X., Kang, M., Hu, D., Yang, P., Liu, Z., 2013. An investigation of airborne allergenic pollen at different heights. *Int. Arch. Allergy Immunol.* 160, 143–151.
- Zhang, H., Wang, Shuxiao, Hao, J., Wang, X., Wang, Shulan, Chai, F., Li, M., 2016. Air pollution and control action in Beijing. *J. Clean. Prod.* 112, 1519–1527. <https://doi.org/10.1016/j.jclepro.2015.04.092>.
- Zhang, J., Rao, S.T., 1999. The role of vertical mixing in the temporal evolution of ground-level ozone concentrations. *J. Appl. Meteorol.* 38, 1674–1691.